



Summary:

The Tutoring Center reached out to the Office of Institutional Effectiveness, Research & Planning to gather data regarding the success rates of courses offered at the College for planning purposes. The data was gathered for the past three academic years (2016-17, 2017-18, and 2018-19).

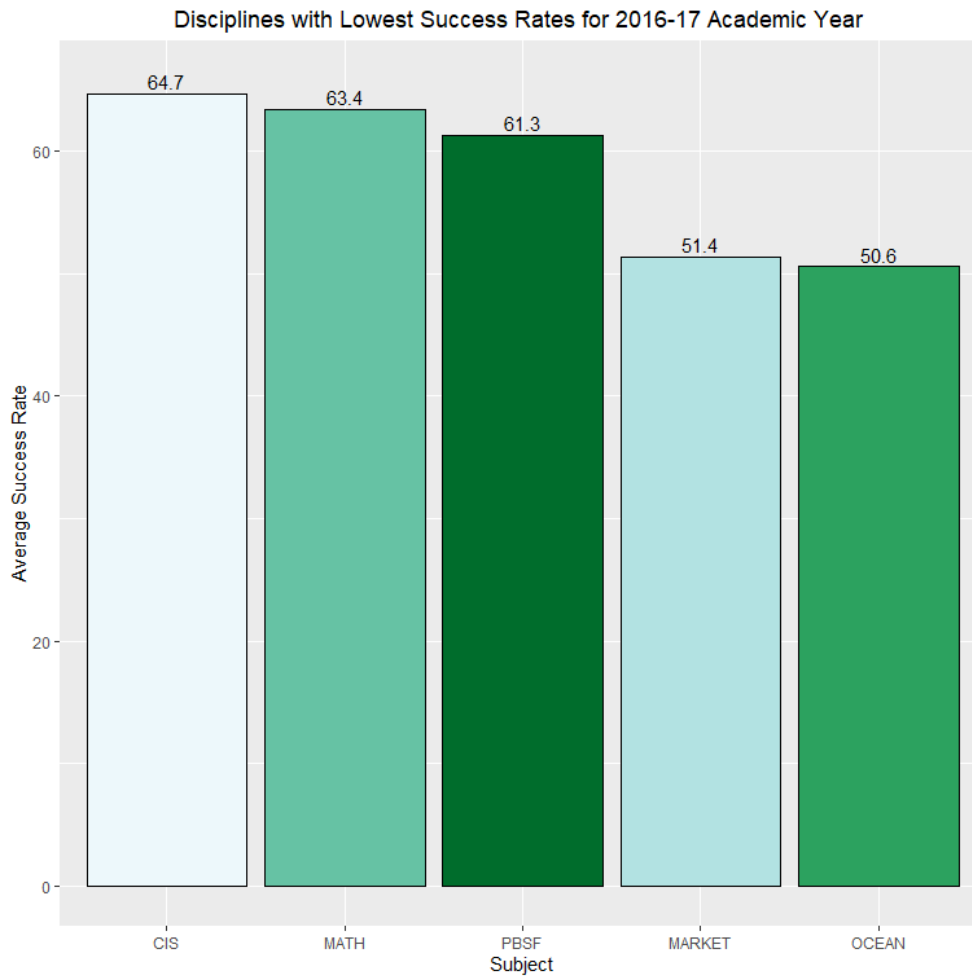
Methodology:

The data for this research brief was gathered through using a Grades on Record report from Informer. The classes and disciplines included within the data tables were those that had at least 20 grades on record earned for each academic year. Any classes or disciplines that had less than 20 students who earned a grade on record were excluded. Additionally, the classes and disciplines selected for this report reflect those with a success rate (grades on record earning an A, B, C, or P) that are below 70%.

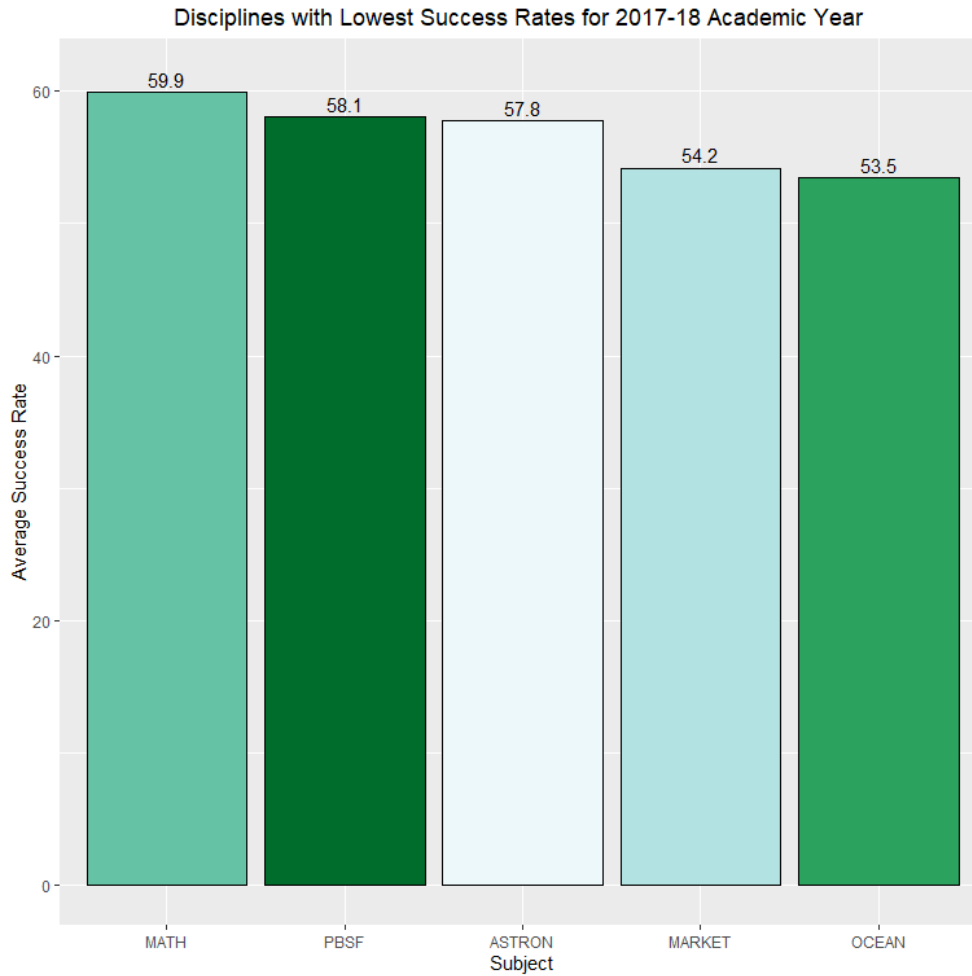
Findings:

The first set of analyses were done by discipline and break down the disciplines with the lowest success rates and by the number of students earning a grade in those disciplines by academic year. Oceanography courses were among the disciplines with the lowest success rates in all three years. Mathematics courses also fell within this range for the three academic years considered. For academic years 2016-2018, Public Safety and Service course success rates dropped from 61% to 58%. For academic years 2017-2019, Astronomy course success rates increased from 58% to 65% but were still found to be among the disciplines with the lowest success rates. The data tables and bar charts below represent the data for each academic year from 2016 to 2019.

Disciplines with the Lowest Success Rates Academic Year 2016-2017		
Class	Success Rates	Count
OCEAN	50.6	83
MARKET	51.4	35
PBSF	61.3	31
MATH	63.4	5551
CIS	64.7	781
CHEM	66.3	914
ARABIC	66.7	33
COUN	67	209
CSCI	68.2	154
ASTRON	69	158
CD	69.1	547

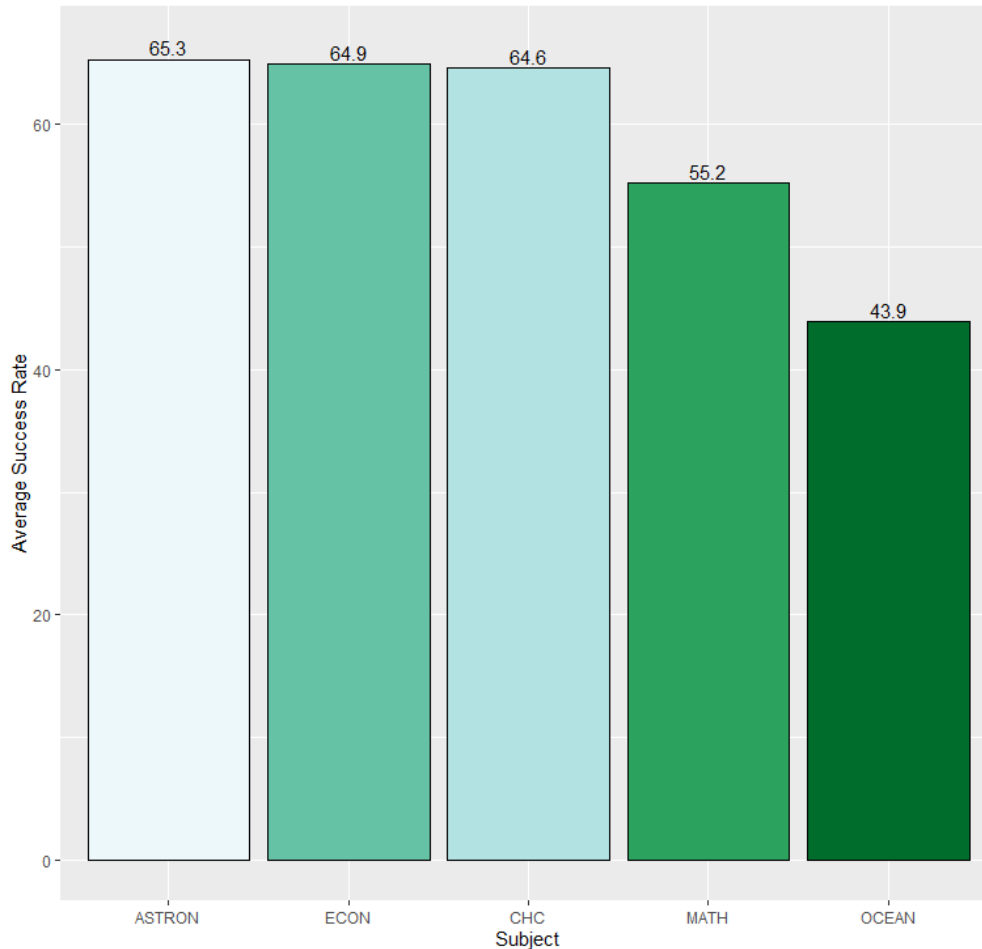


Disciplines with the Lowest Success Rates Academic Year 2017-2018		
Class	Success Rates	Count
OCEAN	53.5	101
MARKET	54.2	48
ASTRON	57.8	102
PBSF	58.1	43
MATH	59.9	5255
READ	64.3	513
BUSAD	65	662
CD	66.1	546
CSCI	66.9	166
ECON	67.2	643
JAPN	67.2	134
GEOG	67.7	93
EA	68.1	72
CHEM	68.7	1041
PSYCH	69.5	1818
CIS	69.8	735



Disciplines with the Lowest Success Rates Academic Year 2018-2019		
Class	Success Rates	Count
OCEAN	43.9	57
MATH	55.2	4940
CHC	64.6	96
ECON	64.9	666
ASTRON	65.3	75
WFP/N	67.9	315
DANCE	68	25
ENVS	68.7	115
CHEM	69.4	1103
OCEAN	43.9	57
MATH	55.2	4940
CHC	64.6	96
ECON	64.9	666
ASTRON	65.3	75
WFP/N	67.9	315
DANCE	68	25
ENVS	68.7	115
CHEM	69.4	1103

Disciplines with Lowest Success Rates for 2018-19 Academic Year



RRN 2068 - Success Rate by Discipline and Course, November 2019

In addition to being examined at the discipline level, success rate by course were also analyzed for each academic year. This data is included in the tables below:

Academic Year 2016-2017		
Class	Success Rates	Count
CHEM-212	40	20
CIS-104	42.9	21
PHYSIC-250	47.5	59
BUSAD-103	50	40
CIS-113	50	34
OCEAN-101	50.6	83
MARKET-100	51.4	35
ART-175	51.9	27
CIS-180	54.2	24
ECON-100	55.1	185
MATH-903	55.7	88
MATH-102	57.6	474
MATH-103	57.6	262
MATH-090	57.9	951
MATH-095	58.6	1007
CHEM-101	58.7	305
CD-105	59.1	291
RELIG-113	59.1	22
ART-120	59.5	37
CIS-173	60	20
MATH-962	60	130
CHEM-150	60.6	218
HIST-135	60.7	28
PBSF-127	61.3	31
ANTHRO-110	61.5	26
MATH-251	61.8	144
CSCI-110	62	79
ART-105	62.1	29
JAPN-101	62.1	87
COUN-110	62.5	96
ART-102	62.8	94
GEOG-102	63	27
CIS-101	63.8	439
ENGL-976	64	516
MATH-115	64.7	85
MATH-160	64.8	145
MATH-265	64.9	57
CIS-165	65	20
KIN/D-163A	65	20
KIN/S-159A	65	20
ASTRON-150	65.1	126
PSYCH-100	65.4	866
ARABIC-101	65.5	29
MICRO-102	65.9	85

RRN 2068 - Success Rate by Discipline and Course, November 2019

Academic Year 2016-2017		
Class	Success Rates	Count
GEOL-100	66.1	56
ACCT-208	66.3	199
EMS-020	66.4	241
MATH-110	66.5	418
CD-132	66.7	27
ENGL-101	67	1499
ASL-101	67.1	322
HIST-170	67.6	71
ANAT-150	67.7	668
MATH-250	67.7	195
CIS-117	68	25
CIS-130	68.1	47
SPAN-101	68.4	354
CD-115	68.6	35
GEOL-101	69	29
THART-100	69.2	133
BUSAD-100	69.3	293
HUM-101	69.4	36
SOC-130	69.5	141
MATH-942	69.9	259

RRN 2068 - Success Rate by Discipline and Course, November 2019

Academic Year 2017-2018		
Class	Success Rates	Count
PHYSIC-250	36.4	44
EMS-020	46.6	253
ASTRON-160	50	20
SPAN-019	50	20
BUSAD-105	51.4	37
OCEAN-101	51.5	97
MATH-251	53.1	143
MATH-102	53.2	498
MATH-903	53.3	240
MATH-995L	53.6	28
ECON-100	54	200
GEOG-110	55.1	49
MATH-250	55.1	227
MATH-095	55.4	1009
MATH-962	55.6	320
MATH-110	55.9	596
CD-105	56.2	308
PBSF-127	57.5	40
MARKET-100	58.1	31
CHEM-150	58.5	234
ARABIC-101	59.3	27
CHEM-101	59.4	335
CIS-113	60	30
CSCI-120	60	30
ACCT-208	60.5	200
ASTRON-150	60.5	81
CD-132	60.9	23
MATH-085	61.2	129
ANAT-101	61.3	375
MATH-090	61.9	771
MATH-942	61.9	63
BUSAD-210	62.6	174
MUSIC-100	62.6	155
JAPN-101	62.7	83
GEOL-101	62.8	43
RELIG-100	62.9	89
KIN/S-116A	63.3	30
PSYCH-100	63.7	1025
HIST-171	63.8	47
COUN-100	64.1	92
READ-980	64.3	513
MATH-160	64.7	150
ENGL-976	64.8	531
HIST-145	65.2	23
BUSAD-100	65.3	372

RRN 2068 - Success Rate by Discipline and Course, November 2019

Academic Year 2017-2018		
Class	Success Rates	Count
CSCI-110	65.3	101
CIS-111	65.7	35
PSYCH-101	65.7	108
MATH-952	65.9	220
MATH-103	66	291
CHC-062	66.2	80
BIOL-131	66.7	63
CIS-130	66.7	36
CIS-165	66.7	24
MATH-952L	67.4	193
MUSIC-135	67.7	31
MICRO-102	67.9	81
SOC-145	67.9	28
ASL-101	68	297
COMMST-174	68	25
ENGL-101	68.9	1500
ART-100	69	197
ENGL-010	69.1	764
POLIT-106	69.2	26
CIS-101	69.6	414
ENGL-260	69.6	23
PHIL-103	69.7	175
SPAN-101	69.7	356
RESP-050	69.9	113

RRN 2068 - Success Rate by Discipline and Course, November 2019

Academic Year 2018-2019		
Class	Success Rates	Count
HIST-145	41.2	34
MATH-995	42.7	344
OCEAN-101	43.9	57
MATH-095	46.6	1322
MATH-103	48.3	300
EMS-020	51.4	282
CIS-105	51.9	27
MATH-910	51.9	285
ANTHRO-110	52.2	23
MATH-090	53.2	79
MATH-110	53.7	752
CHEM-212	55	20
ECON-100	55.8	208
ASTRON-150	58.2	55
MATH-250	58.8	262
WFP/N-604	58.8	51
WFP/N-602	58.9	73
CHEM-101	59.3	562
MATH-160	60.1	198
MATH-102	60.3	534
ANAT-101	60.4	341
CD-105	61	305
KIN/F-970A	62	200
GEOL-101	62.2	37
CIS-182	62.5	24
PSYCH-100	62.8	1070
RESP-050	63.1	84
ASL-101	63.5	326
MUSIC-101	63.6	22
PHIL-107	63.6	22
MICRO-102	63.9	119
CHC-062	64.6	96
FIRET-102	65.5	55
CIS-113	65.6	32
HIST-100	66	636
PHIL-103	66	150
ART-100	66.2	278
JAPN-101	66.2	74
MATH-251	66.2	154
MATH-902	66.4	220
COMMST-174	66.7	48
POLIT-110	66.7	27
ECON-201	67.5	206
MATH-085	67.8	118
CD-112	68.2	22
ENGL-160	68.4	38
ENVS-101	68.7	115

RRN 2068 - Success Rate by Discipline and Course, November 2019

Academic Year 2018-2019		
Class	Success Rates	Count
CSCI-120	68.8	48
BUSAD-100	69.1	411
HEALTH-102	69.1	611
ECON-200	69.3	244
COUN-110	69.6	194
RELIG-110	69.6	23
ENGL-101	69.8	1482
ENGL-976	69.8	444

For questions, please contact Artour Aslanian, Senior Research & Planning Analyst, at aaslanian@craftonhills.edu or 909-389-3331.