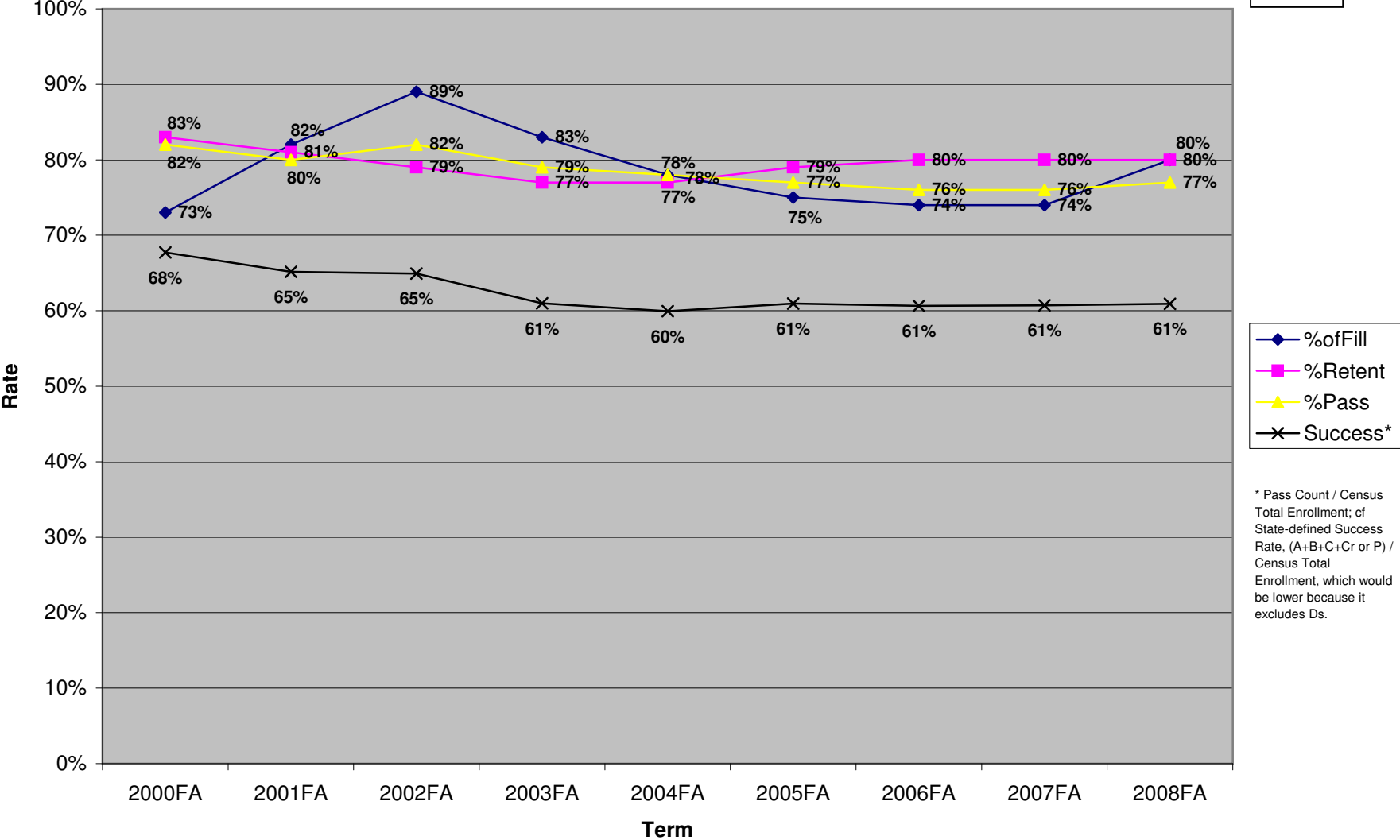


SBVC Fall 2000-08 Fill, Retention, Pass, and Success Rates

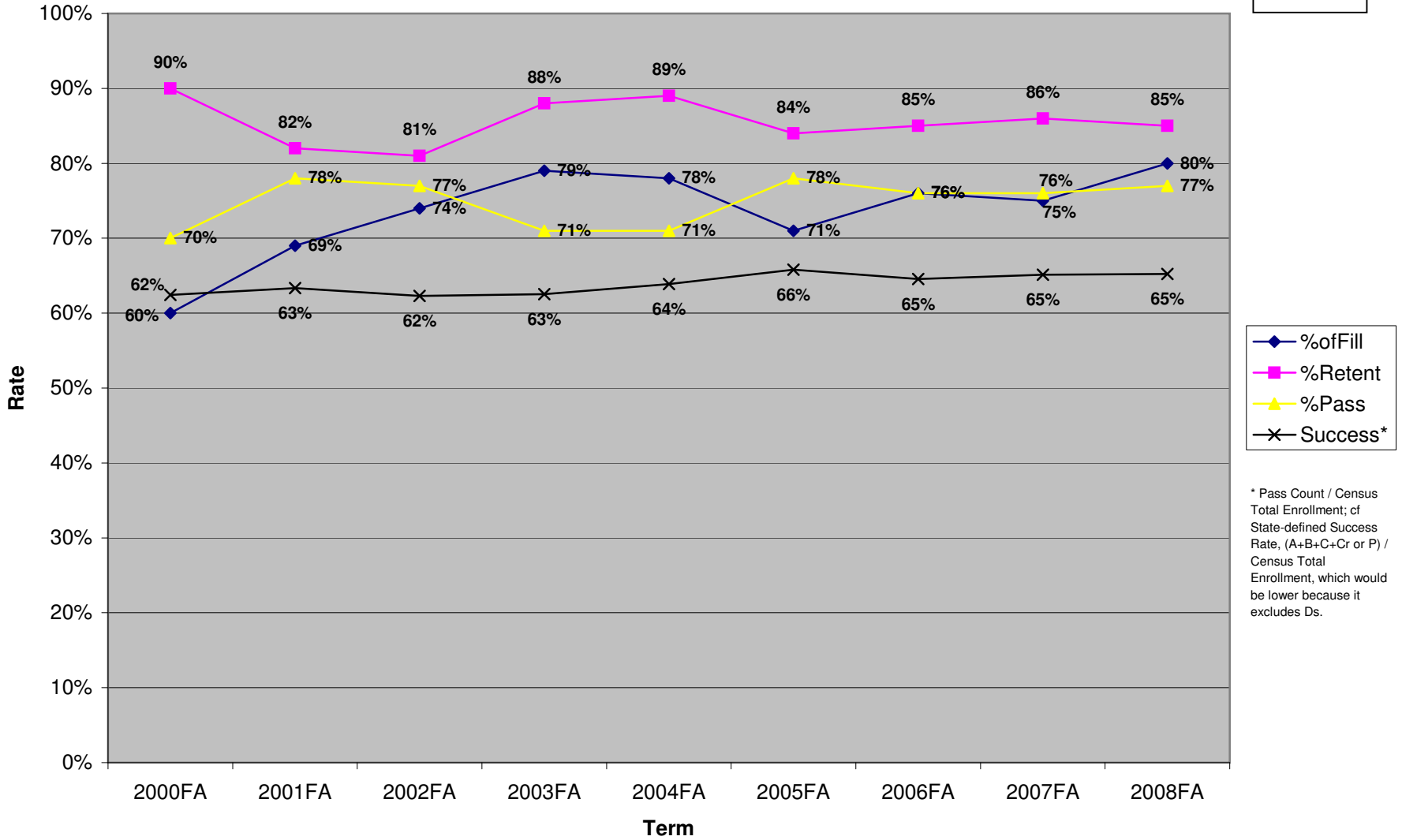
6C



\* Pass Count / Census Total Enrollment; of State-defined Success Rate, (A+B+C+Cr or P) / Census Total Enrollment, which would be lower because it excludes Ds.

### CHC Fall 2000-08 Fill, Retention, Pass, and Success Rates

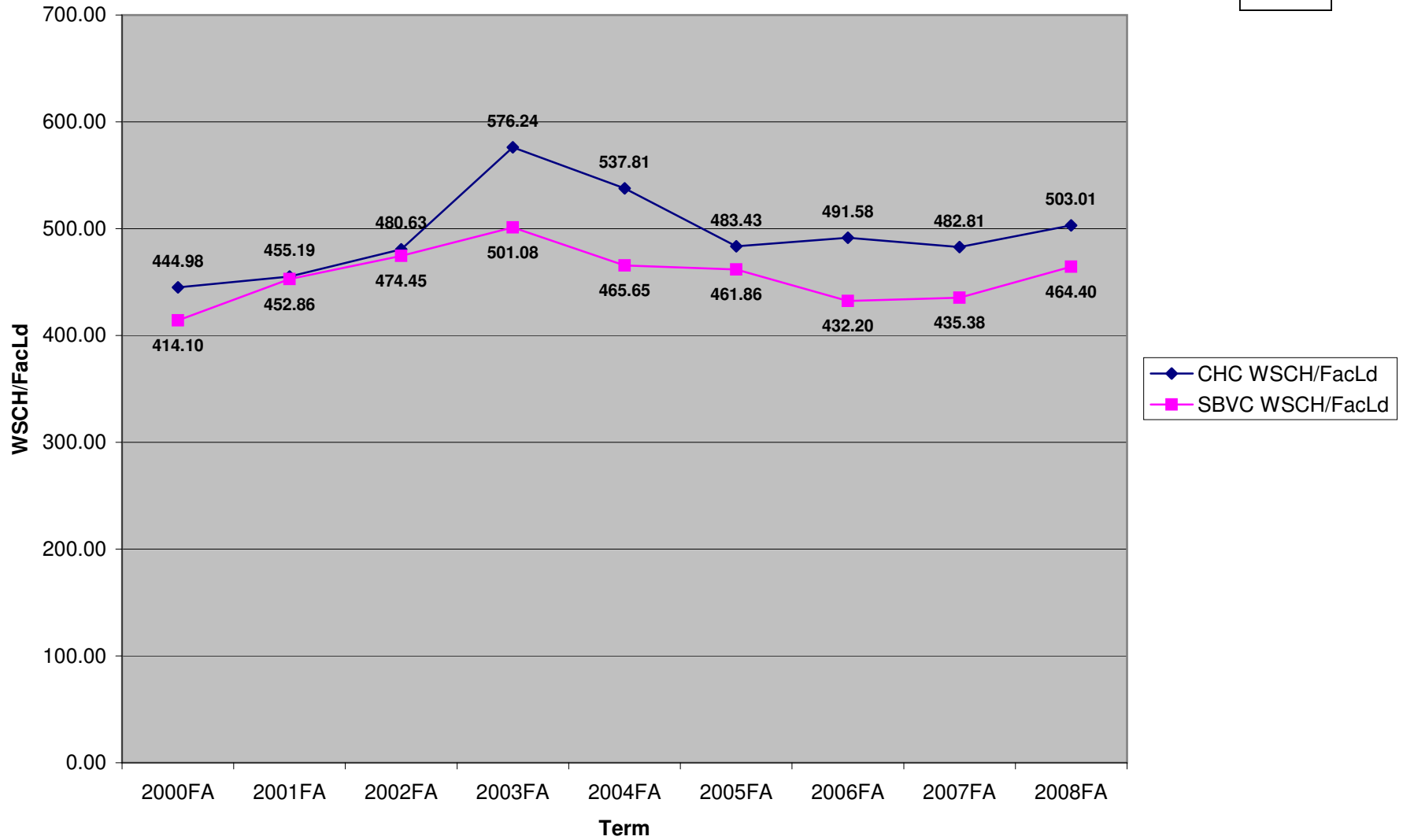
6D



\* Pass Count / Census Total Enrollment; cf State-defined Success Rate, (A+B+C+Cr or P) / Census Total Enrollment, which would be lower because it excludes Ds.

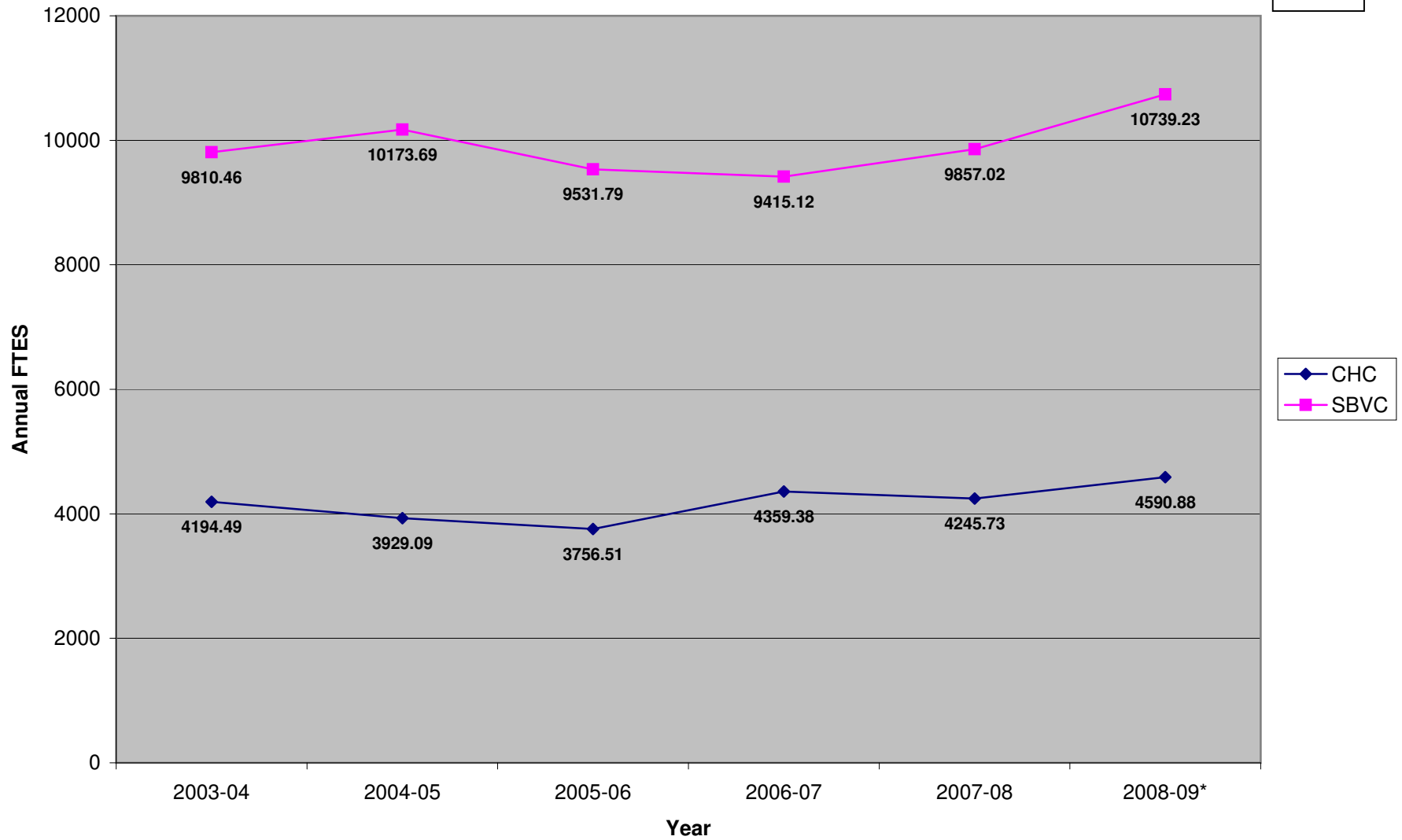
### CHC and SBVC WSCH per Faculty Load, Fall 2000-08

6E



### Total CHC and SBVC FTES, 2003-04 through 2008-09

6F



\* Estimated 8/4/09

Source: Vice Chancellor's Office

ARCC College-Level Indicators for SBVC and CHC (Latest Available Period)

ARCC College-Level Indicator	SBVC	Peer Mean	Difference	CHC	Peer Mean	Difference
A. Student Progress and Achievement Rate, 2002-03 to 2007-08	41.6%	47.4%	-5.8%	51.3%	58.8%	-7.5%
B. Percent of Students Who Earned at Least 30 Units, 2002-03 to 2007-08	65.1%	71.1%	-6.0%	70.6%	69.6%	1.0%
C. Persistence Rate, Fall 2006-Fall 2007	61.7%	60.2%	1.5%	66.9%	67.6%	-0.7%
D. Successful Course Completion Rate, Credit Vocational, 2007-08	74.8%	75.7%	-0.9%	78.0%	74.5%	3.5%
E. Successful Course Completion Rate, Credit Basic Skills, 2007-08	51.9%	56.0%	-4.1%	55.4%	56.0%	-0.6%
F. Improvement Rate for Credit Basic Skills, 2005-06 to 2007-08	52.0%	52.6%	-0.6%	59.5%	52.6%	6.9%
G. Improvement Rate for ESL, 2005-06 to 2007-08	44.9%	41.3%	3.6%	NA	NA	NA
Annual Unduplicated Headcount, 2007-08	9,857			4,246		
Percent by Ethnicity, 2007-08:						
African American	19.8%			4.1%		
American Indian/Alaskan Native	0.9%			1.4%		
Asian	4.7%			3.8%		
Filipino	1.8%			1.8%		
Hispanic	42.2%			25.4%		
Other Non-White	1.1%			1.1%		
Pacific Islander	0.7%			0.6%		
Unknown/Non-Respondent	4.4%			6.0%		
White Non-Hispanic	24.4%			55.8%		
Percent by Gender, 2007-08:						
Female	55.6%			50.1%		
Male	43.7%			48.1%		
Unknown	0.7%			1.8%		