

The background of the slide features a dense pattern of vibrant green leaves in various shades and textures, overlaid with a translucent blue-green area at the bottom showing gentle water ripples. The text is centered within a white rounded rectangle.

Crafton Hills College

**Opening Day
August 18, 2014**



STUDENT REFLECTIONS



ORGANIZATIONAL UPDATE

Farewells & Best Wishes

Dec 2013

- Ken Bryson
- Betty Weischadle

Spring 2014

- Bob O'Toole
- Judy Giacona
- Damaris Matthews
- Janet Burnham
- Terry Koeper

Summer 2014

- Miriam Williams
- JoAnn Jones
- Lorena Guadiana



Moves

- Joe Cabrales returned to Student Services
- Copy Center is reporting to Rebeccah Warren-Marlatt
- Karen Childers as a management intern in HR (6 mos.)
- Robert Brown transferred to English
- Jimmy Urbanovich and Julie McKee will return in Spring

New Employees

- Mariella Long – Account Clerk
- Evan Sternard – Counselor
- Trinette Barrie – Career Counselor
- Hannah Sandy – Interim Coordinator, Health and Wellness
- Naomi Lara – EMS Secretary
- Herberth Jaco – Lab Tech, Physics
- Karen McCartney – Lab Tech, Biology

New Employees

- Mark Snowwhite – Int Dean, Math, English, Reading, and Instr Support
- Emily Spencer – Int Chemistry Faculty
- Daniel O'Hare – Int Alternative Learning Strategies Coordinator
- Rich Fleishman – Int Acct Faculty
- Mike Alder – Int Chief, Fire Academy



ACCOLADES AND CELEBRATIONS



Does anyone out there
have a Tony?



<https://www.youtube.com/watch?v=iXae3Arg-14>

Advances

- Elizabeth Mealey – BS, Lib & Info Svcs
- Cyndi Gundersen – BA, Bus Admin
- Ben Mudgett – BS, Public Admin
- Larry Aycocock – BA, Management
- Alicia Hallex – MA, Educ Counseling





Gracias

Merci

شكراً

A Few Accolades

Thank You

Grazie

Obrigado!

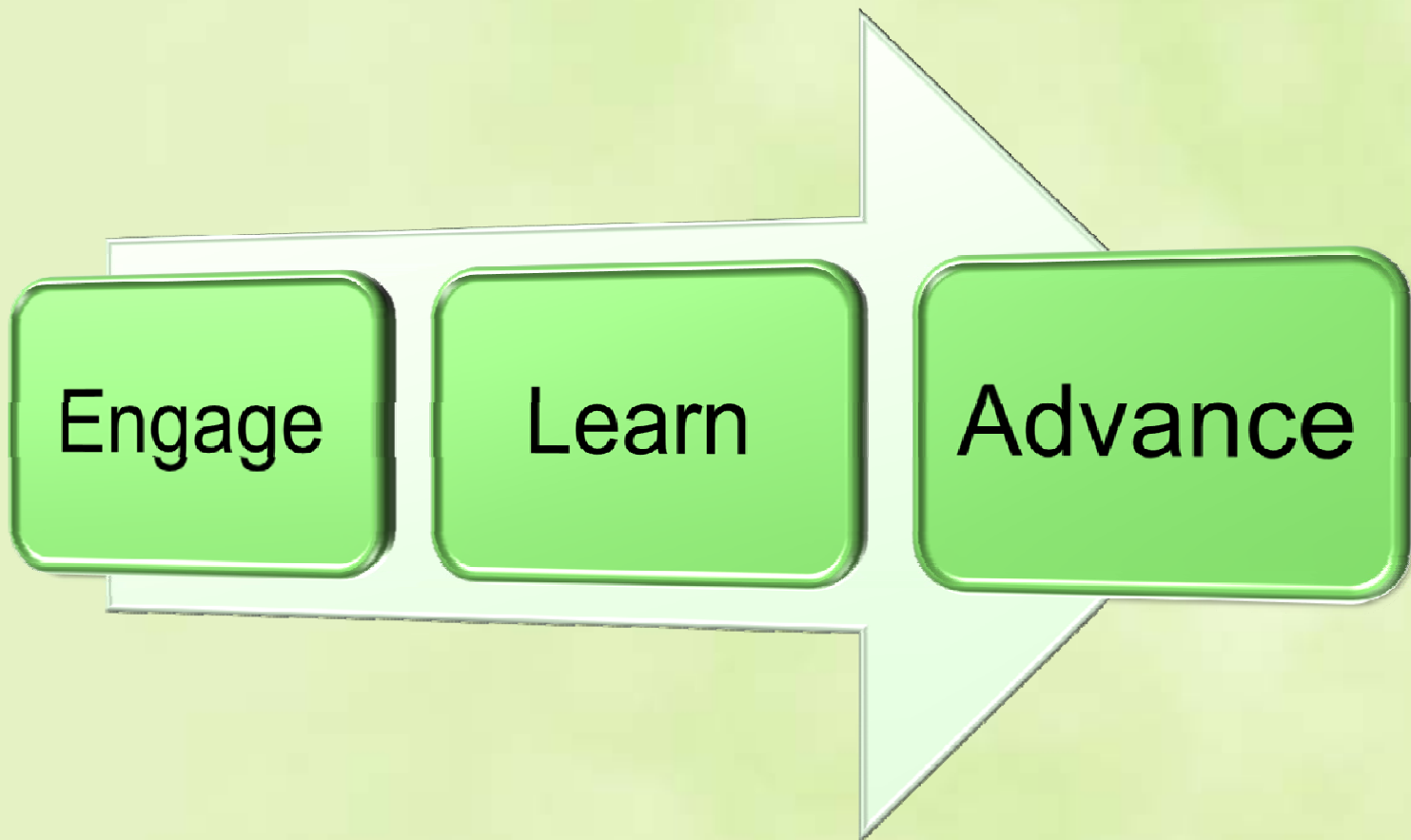


ASPIRATIONS FOR 2014-2015

The Big Stuff

- Student Success & Engagement
- New EMP
- Accreditation
- Educational Partnerships
- Sustainability
- Professional Development
- Construction
- Budget
- Enrollment Management
- Evidence-based Decisions
- Committees
- Safety
- Foundation

Building Pathways



Educational Master Plan

- New Vision, Mission, Values
- Updated and Revised Goals
 - Campus dialogue is next

“Vision without action is daydream. Action without vision is nightmare.”
- *Japanese Proverb*





New Mission & Vision

Our Mission:

Advance the educational, career, and personal success of our diverse campus community through engagement and learning

Our Vision:

Be the college of choice for students who seek deep learning, personal growth, a supportive community, and a beautiful collegiate setting

Crafton Hills College Values

Inclusiveness

**Academic
Excellence**

Creativity

**Advancement of
each individual**

“I am always doing that
which I cannot do, in
order that I may learn
how to do it.”

- *Pablo Picasso*

Educational Partnerships

News and Updates

- Four Year
 - Brandman & ?
 - Loma Linda University Health
- K-12
 - AB 86
 - Inland Leaders



Educational Partnerships

News and Updates

- Community Colleges
 - Region 9 Workforce Development
 - Baccalaureate Proposal
 - Leading From the Middle Team

Budget & Enrollment Management

The Good News:

- State revenues are up
- Commitment to CCs
- Increases in categorical funding
 - Student Success & Equity
 - DSPPS
 - EOPs
- Salary increases
- CHC grew 18% in 13-14



Budget & Enrollment Management

The Bad News:

- Future growth funding uncertain
 - Flat growth is likely
- Colleges' budgets not able to completely absorb the salary increases
- One time funds for 14-15 staffing
- Hiring for 15-16 uncertain
 - Broad input and dialogue needed

"We may encounter many defeats
but we must not be defeated."

- Maya Angelou

"Do not let what you cannot do
interfere with what you can do."

- *John Wooden*

Accreditation

- THANK YOU
- One more formal step



Foundation

- Infrastructure
- Relationship Building
- New Strategic Plan
- \$\$\$\$\$\$\$\$\$\$\$\$\$\$
 - Donors
 - Soft Capital Campaign
 - Endowments

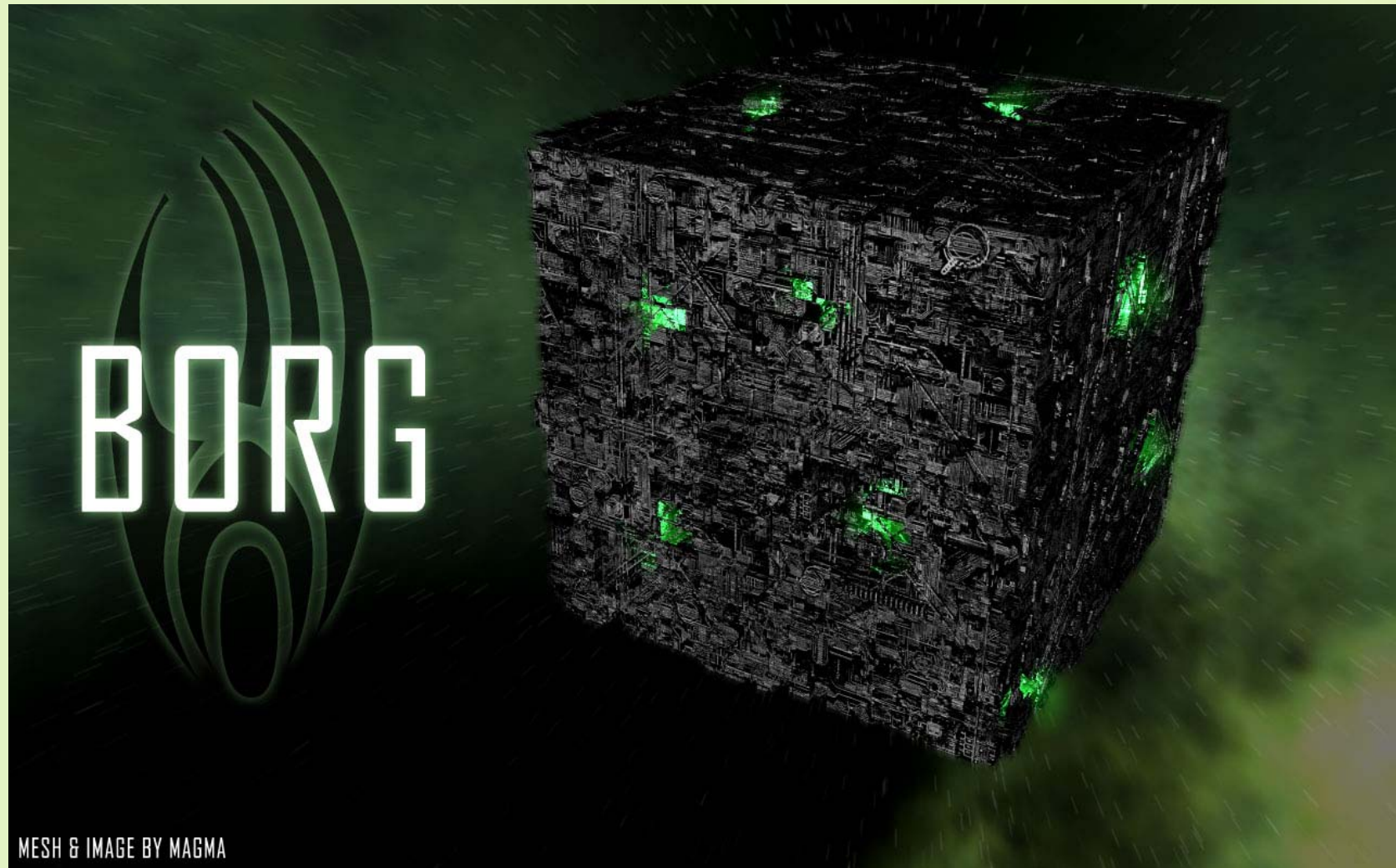
**PARTNER IN
EDUCATIONAL
EXCELLENCE**

Foundation

The CHC Foundation is investing back into the campus

- Infusion funds \$13,500
- Requests from campus \$33,800
- President's Circle innovation mini grants \$10,000
- Student Scholarships \$71,000

Best Organizational Research Gauge Data Cubes



New, Incredibly Easy to Use, Soon to be Award Winning Website

The screenshot displays the Crafton Hills College website homepage. At the top, a navigation bar includes links for 'Find People', 'Departments', 'Mission', 'Give to Crafton', and 'Logins'. The main header features the college's logo, a search bar, and a green bird icon. Below the header is a menu with categories: 'Prospective Students', 'Current Students', 'Online Students', 'Faculty and Staff', and 'Visitors and Alumni'. The main content area is divided into several sections: a large video player showing a woman on a campus with the text 'Fall Classes Start Aug. 19! Register Now'; an 'EVENTS' sidebar listing dates from August 13 to September 1, including 'Roadrunner Rally', 'Opening Day for CHC Faculty and Staff', 'First Day of the Fall Semester!', and 'Labor Day: Campus Closed Test Test Test Test Test Test Test Test'; a 'MUSIC, THEATRE, ARTS AND DANCE' section with an event on September 10; a 'NEWS' section with a link to 'Find Fall 2014 Classes Here!'; a 'ROADRUNNER SCRAPBOOK' section with a link to 'President's Circle Sneak Peek at new Building'; and a 'CHC' section showing a tweet from @MyCraftonHills dated 28 Jul.

Find People **Departments** **Mission** **Give to Crafton** **Logins**

CraftonHills
COLLEGE

Google™ Custom Search **Go**

Prospective Students **Current Students** **Online Students** **Faculty and Staff** **Visitors and Alumni**

Fall Classes Start Aug. 19! Register Now

EVENTS

- Aug 13** 📅 Roadrunner Rally
- Aug 18** ★ Opening Day for CHC Faculty and Staff
- Aug 19** 📢 First Day of the Fall Semester!
- Sep 01** 🚫 Labor Day: Campus Closed Test Test Test Test Test Test Test Test

Event Calendar »

MUSIC, THEATRE, ARTS AND DANCE

- 📅 Donald Strandberg @ CHC Art Gallery Opening Reception: Sept. 10, 4:30-7 p.m.

NEWS

[Find Fall 2014 Classes Here!](#)

ROADRUNNER SCRAPBOOK

[President's Circle Sneak Peek at new Building](#)

CHC
Tweets from a list by CraftonHills

CraftonHills @MyCraftonHills 28 Jul
So sorry, @Melprod_Sometimes



Denise Allen

ACADEMIC SENATE



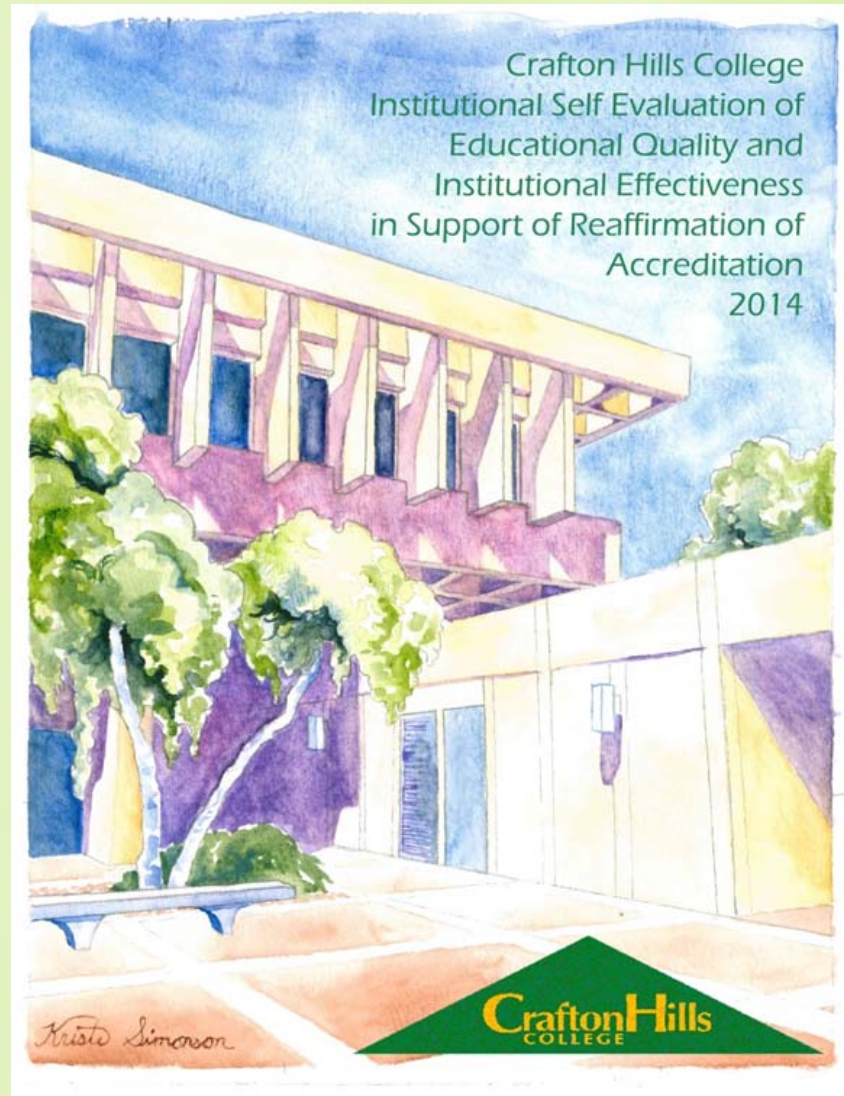
Rebecca Warren-Marlatt

ACCREDITATION & STUDENT SERVICES

The background of the slide features a dense pattern of vibrant green leaves, likely from a tree or shrub, with prominent veins. Below the leaves, there are soft, circular ripples in shades of light blue and green, suggesting water or a similar textured surface. The overall aesthetic is fresh and natural.

Self Evaluation for Accreditation: Status and Next Steps

The Self Evaluation is Completed



So what's next?

- August 27, Cheryl and RWM meet with Dr. Russell to plan the visit



- Mock External Evaluation (proposed) Friday, September 5, 1:30-4:00 p.m.
- External Evaluation Visit, September 29-October 2

The External Evaluation Team

- Dr. Barry Russell, Chair of the External Evaluation Team and President, Las Positas College



- Ms. Renee Pegues, Assistant to the Chair and Exec. Assistant to the VP Admin Services, Las Positas

External Evaluation Team

- Ms. Lori Bennett, *Exec VP, Student Learning, Moorpark College*
- Ms. Julie Bruno, *Professor, Communications, Sierra College*
- Ms. Catherine Chenu-Campbell, *Librarian, Sac City College*
- Ms. Marjorie Duffy, *Professor, CIS, Consumnes River College*
- Mr. Davit Khachatryan, *Dir, Fiscal Svcs, Irvine Valley College*
- Dr. Robert Livingston, *Professor, Bus Admin, Cerritos College*
- Dr. Dena Maloney, *Superintendent/President, Taft College*
- Ms. Heather Ostash, *Vice President, Student Services, Cerro Coso Community College*
- Dr. George Railey, *Vice Chancellor, Educational Services/Institutional Effectiveness, State Center Community College District*
- Dr. Robert Snowden, *Professor, Radio and Digital Media, Consumnes River College*

A Brief Summary of Standards I-IV



Standard IA, Mission

- **Strengths**
 - Mission is linked with EMP, PPR, DSP, Left Lane, Student Success Plan, Enrollment Management Plan, and many others
 - Mission is continuously reviewed
- **Weaknesses**
 - None
- **Planning Agenda**
 - None



Standard IB, Institutional Effectiveness

- **Strengths**
 - Learning and effectiveness is assessed at all levels
 - Dialogue is robust and ongoing
 - Mission and EMP under revision
 - Alignment with district plans and imperatives
 - Progress toward goals is assessed; results are used for institutional improvement
 - The results of assessment are readily accessible
 - We “tweak” our planning, evaluation, and resource allocation cycle as needed
- **Weaknesses**
 - Assessment of courses and programs.
- **Planning Agenda**
 - None

Standard IIA, Instruction

- **Strengths**
 - Planning
 - Faculty Input and Engagement
- **Weaknesses**
 - Assessment in specified courses/programs
 - SLOs and Course outlines
- **Planning Agenda**
 - Make course outlines easily accessible
 - Attach SLOs to course outlines
 - Develop a system to cross check SLOs on syllabi with outlines



Standard IIB, Student Support Services

- **Strengths**
 - The College provides critical information and services in a variety of formats
 - Services assess their effectiveness and use the results for improvement
 - Plans align with institution level plans
 - Diversity Programming
 - Civic engagement
- **Weaknesses**
 - No online counseling yet
 - Timeliness and accuracy of catalog
- **Planning Agenda**
 - None



Standard IIC, Library, Learning Resources

- **Strengths**
 - Broad range of books and materials
 - Information is accessible
 - Effectiveness is assessed in Tutoring and Library
 - Tutoring services meet student needs
- **Weaknesses**
 - Staffing
- **Planning Agenda**
 - None



Standard III.A: Human Resources

Strengths

- Quality of Staff and Faculty
- Professional Development
- Needs Assessment
- MOU for SLOs
- Ethics Statements
- Equity & Diversity



Weaknesses

- No Approved HR Handbook
- Long Range Human Resources Plan
- Inconsistency between policy and process-evaluations

Planning Agenda

- Revise faculty evaluation tool to include SLOs
- Ensure evaluations take place timely

Standard IIIB, Physical Resources

- **Strengths**
 - Facilities Master Plan
 - building, infrastructure, & site improvements
 - Safety training
 - Compliance with applicable laws and regulations
 - Energy management
 - Construction and Construction standards
 - Facility assessment
- **Weaknesses**
 - Funding for all construction/renovation needs
 - Operational funding to support facilities
 - Improved utilization of space
- **Planning Agenda**
 - None



Standard IIIC, Technology Resources

- **Strengths**
 - Strong district/college infrastructure
 - Technology supports teaching, learning, service
 - Training at site and district levels
 - Replacement and maintenance plans
 - Alignment of plans
- **Weaknesses**
 - DE plan out of date
- **Planning Agenda**
 - Update DE Plan



Standard IID, Fiscal Resources

- **Strengths**

- Resource allocation is integrated with planning
- FMP is aligned with the EMP
- Five-year budget projections
- District audit ensures compliance with federal and state requirements
- District allocation model includes liabilities and future obligations
- Rigorous dialogue and opportunities for input



Standard IID, Fiscal Resources

- **Weaknesses**

- History of deficit spending and high fixed costs
- Increasing capacity without a firm growth model
- Weak position control (District)
- No district strategy for growth (District)
- No multi-year fiscal planning (District)

- **Planning Agenda**

- Address deficit
- Improve position control tools
- Engage in long range planning



Standard IVA, Leadership

- **Strengths**

- Leadership is promoted at all levels of the institution
- Written policy for participation in decision-making
- Defined roles in governance
- Appropriate bodies make recommendations about learning programs
- Responsiveness to Commission recommendations
- Honesty and integrity



Standard IVB, Governance

Strengths

- Clearly defined roles
- Board establishes policies to assure student learning programs
 - Actions are consistent with policy
 - Self-evaluates, is informed about accreditation, selects the Chancellor
- Chancellor provides leadership, shares vision
- President has responsibility for the college
 - Guides improvement, evaluation, resource planning and distribution, and evaluates systems
 - Communicates effectively
- District leads—planning, evaluation, budget, and liaison between college and governing body

Standard IVB, Governance

- **Weaknesses**

- Policies outdated; short time frame for revision
- Deviation in the collegial consultation process for creating and updating policies and procedures
- Chancellor's evaluation must be completed (BP 2175)
- Instances of decision-making without consultation (AB955)
- Services to the campus need improvement, esp. HR
- No long-range financial and enrollment management plan

- **Planning Agenda**

- Board adheres to policy concerning policy development and approval
- Board adheres to policy concerning evaluation of the Chancellor
- District secures stable leadership in HR
- District develops long-range financial plans and hires a permanent VC Fiscal Services

New College Planning Initiatives

Student Success and Support Plan

Student Equity Plan

Educational Planning Initiative

Violence Against Women Act/ Campus
Sexual Violence Elimination Act

Student Success and Support Plan



- Purpose: plan and document how SSSP services will be provided to credit students
- Due Friday, October 17, 2014
- Process: Includes college wide input
 - Draft to SSEEMM in late August
 - Input and approval elicited from constituencies
 - Final draft to Crafton Council

Student Equity Plan

- Purpose: Engage in planning to increase access, course completion, ESL and basic skills completion, degrees, certificates, and transfer
- Equity: Due November 21, 2014
- Process: Includes broad input
 - Draft to SSEEMM in late August
 - Input and approval elicited from constituencies by October
 - Final draft to Crafton Council



Educational Planning Initiative Pilot

- Provide transcript, articulation, and curriculum inventory elements
- Provide a low cost/no cost planning and degree audit solution
- Develop a student services portal
- Help college counselors leverage technology to reach more students.



Violence Against Women Act: Campus Sexual Violence Elimination Act

To access Title IV monies, colleges must:

- Compile and report incidents of sexual assault, domestic violence, dating violence, and stalking
- Include in the Annual Report a policy statement addressing:
 - Prevention
 - Educational programs
 - Sanctions
 - Reporting Procedures
 - Protection of confidentiality
 - Written notifications





Michelle Tinoco

CLASSIFIED SENATE



ADMINISTRATIVE SERVICES UPDATE

What we may have time for...

- Admin Services: Supporting CHC
- Budget
- Mail
- Safety
- Construction

Admin Services Direction



Supporting our Mission & Vision:

The mission of Crafton Hills College is to **advance** the educational, career, and personal success of our diverse campus community through **engagement** and **learning**.

Crafton Hills College will be the college of choice for students who seek deep learning, personal growth, a **supportive community**, and a **beautiful** collegiate **setting**.



Budget

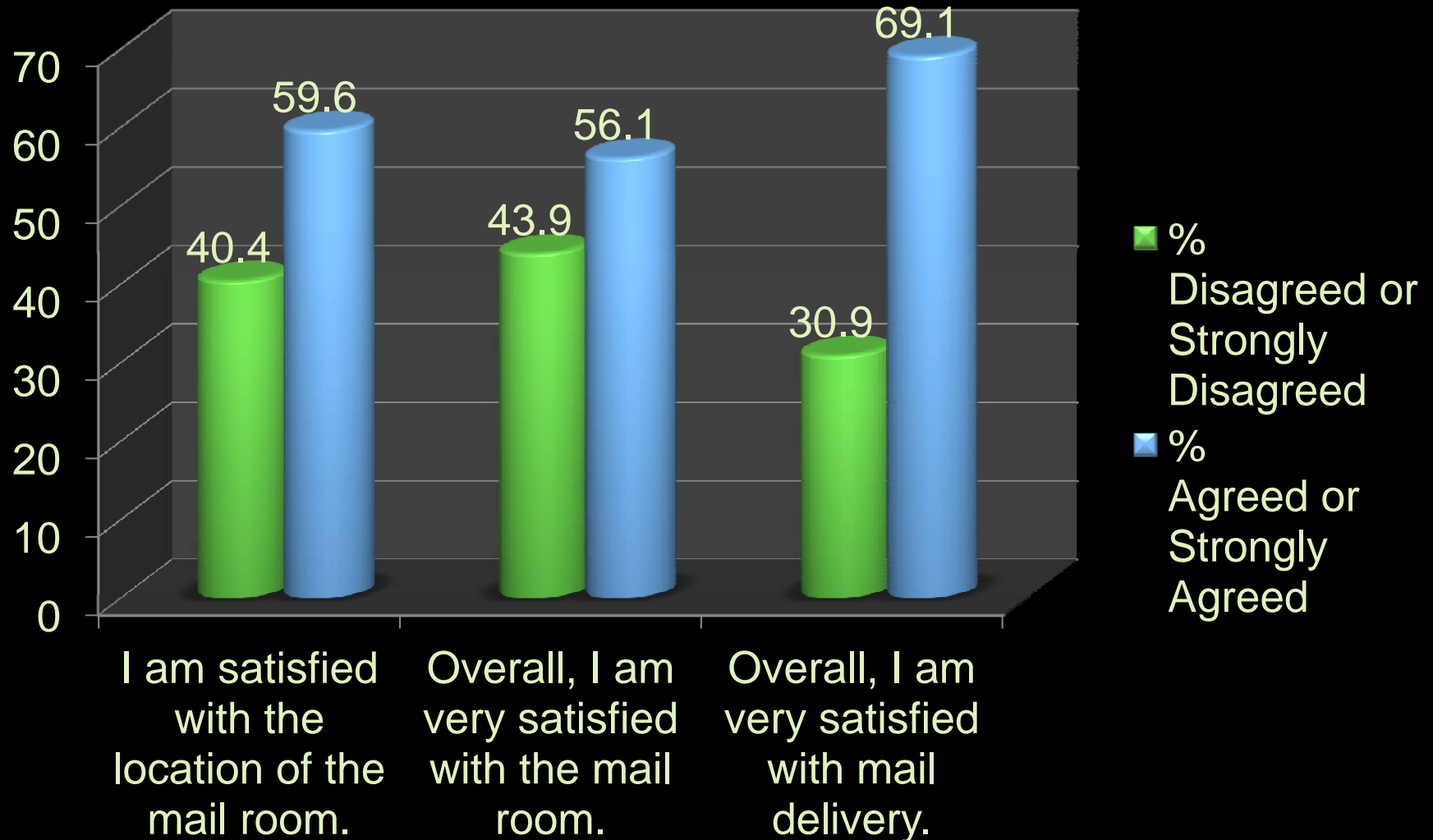


Budget



- 2013-14 Outcome
 - Funded FTES = 4247 (2.26% funded growth)
 - Growth at CHC = 18%
 - Actual FTES 4499 = Target for 2015
- 2014-15 Projections
 - Projected funded FTES = 4393 (3.43% growth; 31.24% of Allocation)
 - FTES Target = 4499
 - Leaves 106 unfunded FTES
- Budget Direction 2015: maintain & plan for future

Ahhh...The Mail



Safety

- Injury & Illness Prevention Plan (IIPP)
- Emergency Preparedness
 - California Great ShakeOut
 - Thursday, October 16th at 10:16 AM



Construction



Parking – Fall and Spring



“The Churn” 2015



Parking



CRAFTON HILLS COLLEGE
PARKING MAP
UPDATED: AUGUST 2014

TO REDLANDS



+Lighting

**+62 staff
thru 5pm**

LEGEND

- Construction Area
- Student Parking
- Staff Parking till 5 PM
- Staff Parking
- ADA Parking Stall

Other Points:

- **Added Staff Parking:**
 - MSA, KHA, PAC
- **Added +/- 475 Stalls**
- **Lost 235 Stalls**
- **Staff to Student**
 - Lot G, Lot K, Lot L

PARKING PERMITS ARE REQUIRED BEGINNING:
AUGUST 27, 2014 FOR FALL SEMESTER
JANUARY 20, 2015 FOR SPRING SEMESTER

TO CHAPMAN HEIGHTS

+413
264

Free Omni Trans Ride with Student ID

NO PERMIT REQUIRED TO PARK

TO YUCAIPA

The “Churn” 2015



- Churn?
Merriam-Webster
“to stir or mix something with effort”
“to produce, proceed with, or experience violent motion or agitation”
- What’s Churning? M&O, CHS, LADM, MSA, Fire Academy, EMS, Bookstore, Cafeteria, SSB, SSA
- Benefit on the other end of effort (i.e. Engage & Learn) = ?


ADVANCE





Crystal Sultzbaugh

STUDENT SENATE



Bryan Reece (a.k.a. Dr. Love)

INSTRUCTION

Instruction Office Operations

	Engage	Learn	Advance
Enrollment/Schedule (Fewer Schedule Errors; Hold vs. Expand Access; R25)		X	X
Catalog Development (Fewer Errors; Smart Catalog; Work Flow)			X
Facilities (Transition Planning)		X	
Curriculum (TMCs)			X
Personnel (Hiring and Recruitment; Data Driven Prioritization; Professional Development)	X	X	X
Support Staff Services (Committees; Photocopies; SLO Clerical/Technical Support)		X	

Division/Department Operations

	Engage	Learn	Advance
SLOs (Status Report; Assessment Calendar)		X	
Annual Plans and Program Review	X	X	X
Overload at 7 Hours Max		X	
Positive Attendance Scheduling and Reporting			
College Hour Preservation	X	X	
Evaluations	X	X	X
Mid-Semester Division Meeting	X	X	X
Final Exam Schedule			X
Schedule Development (Access and Success)	X	X	X

Strategic Priorities

	Engage	Learn	Advanc
Professional Development (Faculty Release; Dean Papas; Learning Institution; Difficult Conversations)	X	X	X
Possible Reorganization (Disproportionate Growth; Budget Issues)		X	X
Departmental Goals for Engage-Learn-Advance	X	X	X
Student Dashboard	X	X	X
Program Dashboard	X	X	X
Tablet Initiative	X	X	X
Department Websites		X	X
High School Partnerships	X	X	X
College Hour Programming	X	X	
Bachelor's Degree (BA in Allied Health and Emergency Services)	X	X	X
Basic Skills Plan		X	X
Contextualized DLAs (Science, CTE, Writing)		X	X
Left Lane Expansion	X	X	X
Three Peaks Challenge Expansion	X	X	



ANNOUNCEMENTS



DISTRICT UPDATES